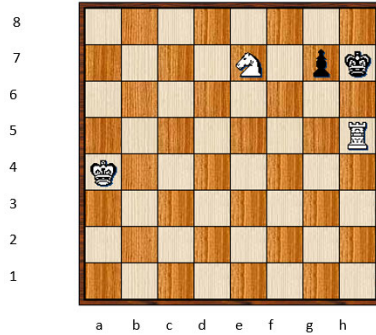


Mate with helper

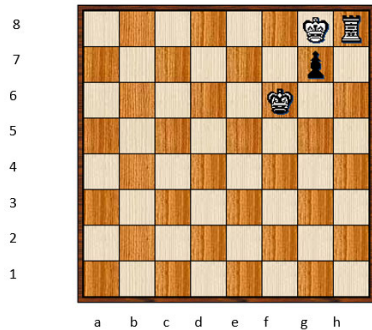
https://en.wikipedia.org/wiki/Checkmate_pattern#Anastasia's_mate

Anastasia's Mate



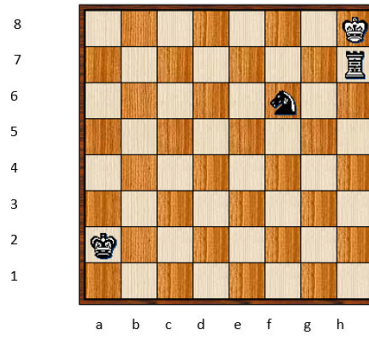
Pattern: Piece blocks K, N denies escape squares, Rh5#.

Anderssen's Mate



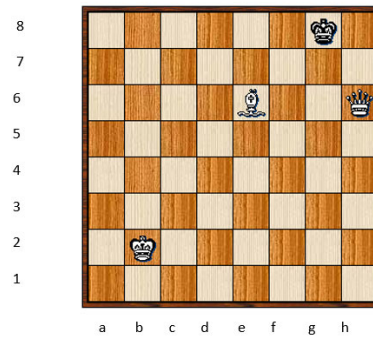
Pattern: K on h7, R to h-file forces Kg8, then Kh8#

Arabian Mate



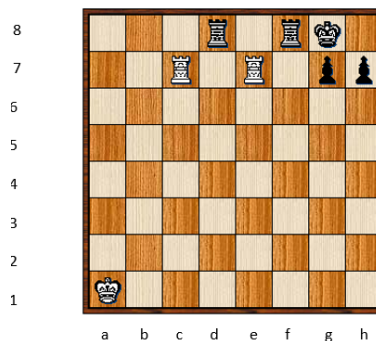
Pattern: N protects mating R, blocks escape

Balestra Mate



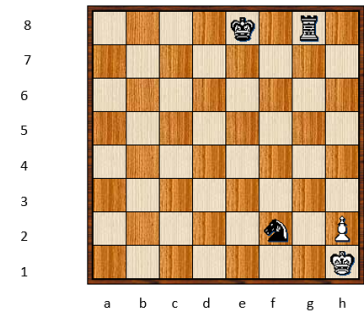
Pattern: Q blocks file and diagonal, B mates

Blind Pig Mate
W to mate in 3



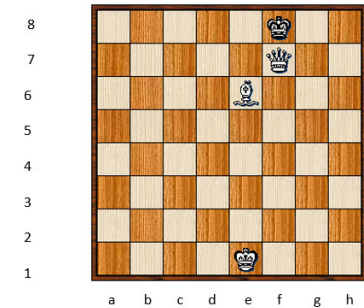
Pattern: R-R battery or Q-R battery

Corner Mate



Pattern: R (or Q) blocks file, K is blocked by own piece, Nf2#. Can replace Nf2# with Bf3#.

Damiano's Bishop Mate



Pattern: Any piece that can protect the Q on f7 can replace B. Pawn, K, N, R, or 2nd Q.

Q confines K to rank 8, K must move to where protected Q can check and force to mating square.